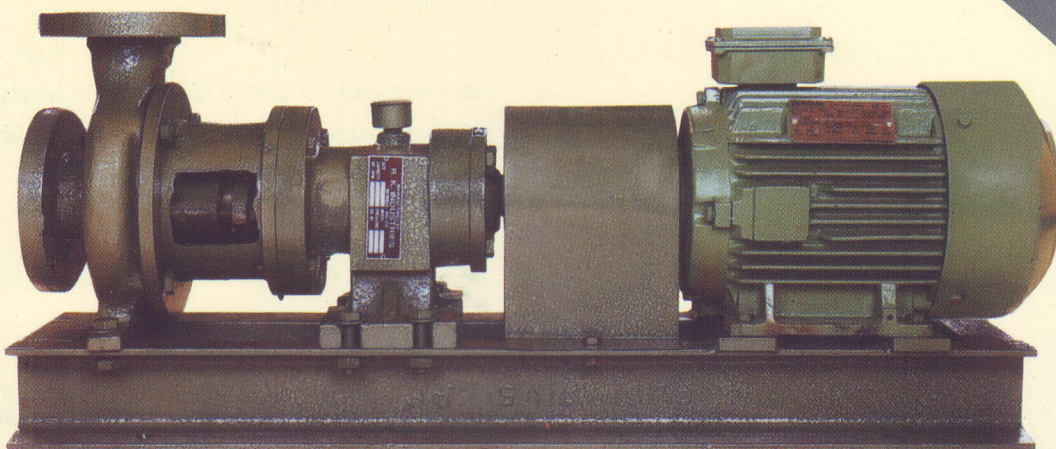


RKI

R K INDUSTRIES

Chemical process pumps
for your hard to handle
corrosion problems



Pumps are designed for easy maintenance. In addition to the contact parts the bearing block adapter (part No. 07) can be offered of the same material of construction that of pump. All the other parts which are not coming in contact with liquid are coated with a chlorinated rubber paint, resin or any other corrosion resistant coating to prevent the parts from atmospheric corrosion

VOLUTE CASING

Top centerline discharge, self venting casing with supporting feet and suction / discharge connections integrally cast.

IMPELLER

Semiopen type impeller designed for high efficiencies and low NPSH requirements, screwed on shaft and locked with lock-nut. No damage caused in case of wrong rotation.

SHAFT AND SHAFT SLEEVE

The shaft is designed for 0.05 mm maximum deflection at mechanical seal. All bearing surfaces are ground to less than 0.8 micron PMS. A renewable shaft sleeve is provided at the fluid end.

BEARING FRAME AND BEARINGS

Heavy C.I. Construction, precision machined for minimum shaft deflection both bearings are single row, deep groove of reputed make and lubricated with grease. Impeller clearance can be adjusted externally by telescopic arrangement provided.

BASE PLATE

Heavy C.I. Base plate machined for perfect alignment and less vibrations.

MATERIAL OF CONSTRUCTION

- Cast Iron
- Cast Steel
- Stainless Steel 304
- Stainless Steel 316
- Stainless Steel 316 L
- Alloy 20
- Hast Alloy
- Ni-hard

PART LIST

- 01 Volute Casing
- 02 Impeller
- 03 Back Plate
- 04 Bush Bearing
- 05 Gland Pusher
- 06 Gasket
- 07 Bearing Block Adapter
- 08 Bearing Block
- 09 Bearing Cover
- 10 Shaft
- 11 Shaft Sleeve
- 12 Impeller Lock Nut
- 13 Gland Packing
- 14 Bearing
- 15 Grease Cup
- 16 Oil Seal
- 17 Oil Seal
- 18 Circlip
- 19 Lok Nut/Circlip

APPLICATIONS

- Virtually All The Chemicals,
- Acids,
- Alkalies,
- Solvents,
- Slurries,
- Planting,
- Etching Pickling Solutions,
- Pesticides Etc.

SPECIFICATIONS

- Capacity: Upto 50 m³ /hr,
- Head: Upto 50 Meters,
- Shaft Sealing : gland packing or mechanical seal.
- Operating pressure : 5kg cm²
- Temperature : Upto 200^oc
- Speed : Upto 3000 rpm

SALIENT FEATURES

- Designed as per ANSI.D73.1 1974.
- Horizontal centrifugal back pull out type.
- Single stage, end suction, top centerline discharge.
- Parts are redundant to facilitate installation, maintenance and minimize spares inventory.
- Designed as sturdy, reliable and trouble free equipment for handling even hard to handle corrosive liquids and slurries.
- Bearing housing cooling jacket, a integral part of design.
- Reliable mechanical seal options to give zero leakage.

